



# QRD1000IFace5L

Biometric recognition: face + palm + fingerprint + RFID

Temperature measurement at 30-50 cm / 34-45 °C. Accuracy  $\pm 0.3$  °C.

QRD1000IFace5L is a biometric terminal for high-speed access and presence control, **with face, fingerprint, palm vein, temperature and RFID recognition**. It incorporates the most advanced European temperature sensor on the market.

The terminal increases safety levels in all aspects, since its recognition technology does not require any type of contact and **can be configured to suit your needs**. In addition, it has functions that allow the detection of mask and fever in the user. It includes **Mifare RFID reader, 125 khz and DUAL**.

Hand recognition is performed in just 0.35 seconds, comparing up to 3,000 templates. The terminal is the ideal solution for all facilities where reducing the spread of germs and preventing the spread of infections is essential, such as hospitals, factories, schools, shopping malls and other public spaces.

## Features QRD1000 IFace5L

- Visible Light facial recognition with Deep Learning.
- Fully configurable multiple verification according to your needs.
- Facial, palm, fingerprint, temperature and RFID proximity card recognition. Body temperature measurement (optional)
- Dual camera for real-time face detection.

- Recognition distance: 0.3 - 3 m.
- Anti-spoofing algorithm against printing attack (laser, color and B/N photos), video attack and 3D mask attack.

### Anti-epidemic functions

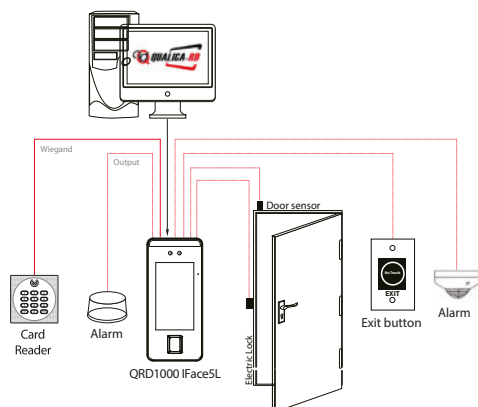
The entire QRD1000 IFace5L series:

- Face detection even when wearing mascara.

## Technical Specifications

	QRD1000 IFace5L
Display	5" touch screen
Faces	6.000
Hand palms	3.000
Footprint	Fingerprint 6.000 (1:N) / 10.000 (1:1)
Cards	10.000 / Mifare / 125khz / DUAL
Registers	200.000
Operating system	Linux
Standard Functions	Card ID, ADMS, T9 input, DST, camera, 9-digit password, user ID, access groups, vacation, Anti-passback, recordings, alarm, multiple verification modes
Hardware	900MHz Dual Core CPU, 512MB RAM / 8G Flash memory, 2MP WDR camera, adjustable LED lighting
Communication	TCP/IP, WiFi, Wiegand input/output, RS485
Access Control Interface	Lock relay output, door sensor, exit button and auxiliary input Fingerprint,
Optional Functions	hand, temperature and RFID. *Facial recognition is standard.
Verification Speed	≤1s
Algorithms	Latest version of the algorithm
Power Supply	12V 3A
Humidity	10% - 90%
Temperature	-10 °C - 45 °C
Dimensions	91.93*202.93*21.5mm / With temperature sensor: 91.93*220*22.5mm
Software	Qualica-RD TIME & CLOUD / Qualica-RD Empresa Profesional/ Qualica-RD Access Control BIOS

### Configuration



### Dimensions (mm)

